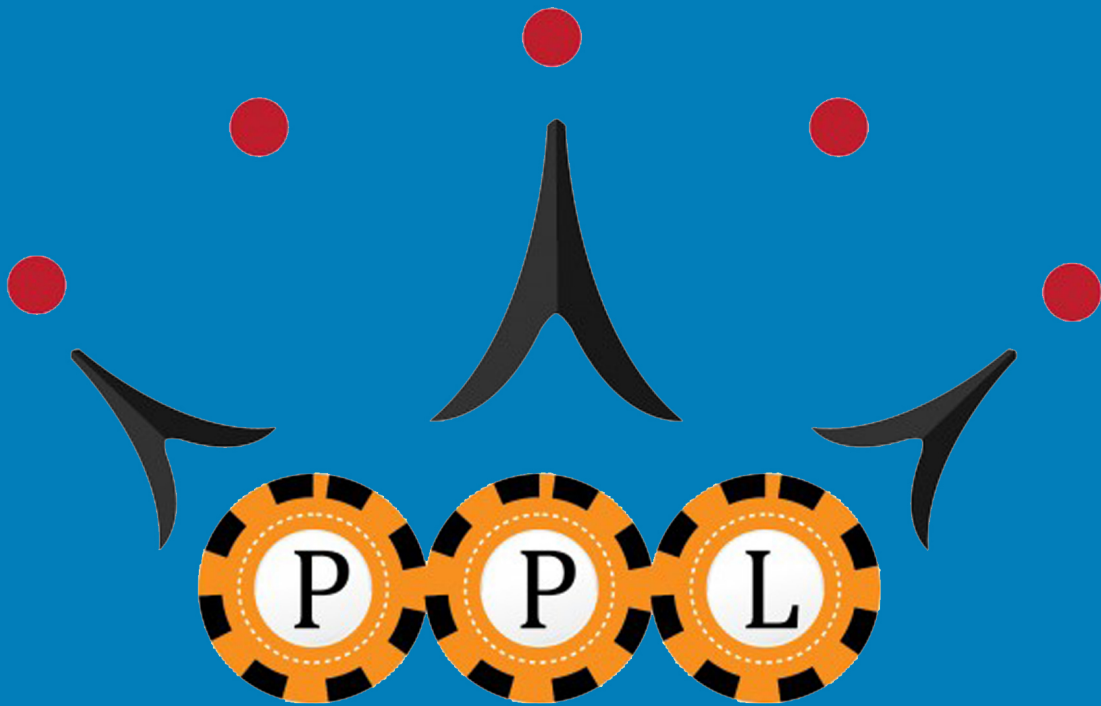




# POKER CALCULATOR PRO



POKERPROLABS<sup>.COM</sup>

# INSTRUCTION MANUAL



## TABLE OF CONTENTS:

WELCOME TO POKER CALCULATOR PRO	03
INSTALLATION & SET-UP	04
AUTO IMPORT	05
PLAYING A TABLE WITH POKER CALCULATOR PRO	06
THE INFORMATION WINDOW	07
THE POKER CALCULATOR PRO HUD	08
PLAYER HUD - POPUPS (PREFLOP)	10
PLAYER HUD - POPUPS (POSTFLOP)	11

### ADVANCED CUSTOMIZATION:

GAME PROFILE SETTINGS	12
GAME PROFILE SETTINGS - PROFILES AND PRESETS	13
GAME PROFILE SETTINGS - PREFLOP	14
GAME PROFILE SETTINGS - FLOP	16
GAME PROFILE SETTINGS - TURN AND RIVER	16
GAME PROFILE SETTINGS - BLUFFING	17
GAME PROFILE SETTINGS - CHECKRAISE	18
GAME PROFILE SETTINGS - SLOWPLAY	19
GAME PROFILE SETTINGS - NOTES	19
HUD MANAGER	20
HUD MANAGER - CREATING YOUR OWN HUD PROFILE	21



## WELCOME TO POKER CALCULATOR PRO

PokerCalculatorPro is your strategic helper at the table. It will give you useful mathematical information along with recommendations of what actions to take, based on this information.

The screenshot displays the Poker Calculator Pro interface. On the left, a table lists 9 players with their names and actions for Preflop, Flop, Turn, and River. The Flop cards are 7♥, T♥, 7♣. The Turn card is 7♦. The River card is 7♦. The interface also shows a 'Check/Call' button, a 'Chance of ...' section with a 'Full House' probability of 17.2% and 4 outs, and a 'Winning:' section showing 46.95% winning probability, 7.00 to 1 pot odds, and 'Your Hand: Two Pair Tens and Sevens'.

Seat	Player Name	Preflop	Flop	Turn	River
1	ABurnTT	X			
2	tmx187	X			
3	ETHpokerM	SB C	✓ X		
4	viralis	BB ✓	✓ X		
5	BluffPolice	C	✓		
6	bokje1	X			
7	nenesalim	C	✓		
8	sativav	C	B		
9	WGZPRO	C	X		

Chance of ...  
Full House 17.2 4

Winning: 46.95%  
Pot Odds: 7.00 to 1  
Your Hand: Two Pair Tens and Sevens

*Note: Some of the features in Poker Calculator Pro are very advanced, and as such some poker rooms have decided they provide too much of an advantage against players who don't have Poker Calculator Pro.*

*PokerProLabs has worked with many poker rooms to ensure you can still use the program without breaking any of the rooms' terms and conditions.*

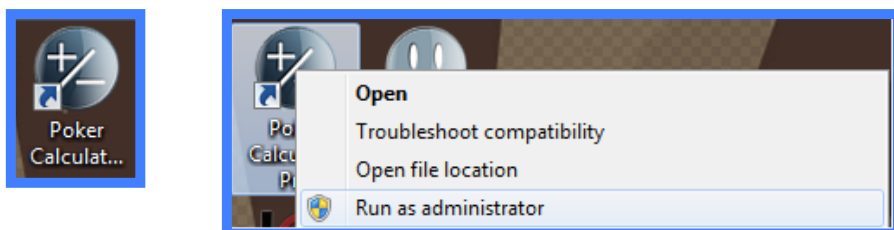
*For example, on PokerStars the **Recommendations** feature will automatically be disabled by Poker Calculator Pro, as it is against PokerStars' T&C.*



## INSTALLATION & SET-UP

First you will need to visit the [Poker Calculator Pro](#) page and download the software with the [Download Now](#) link. Once you have downloaded [PokerCalculator7.exe](#), open the installer. The installer will guide you through the process, and once complete the Poker Calculator Pro icon will appear on your desktop.

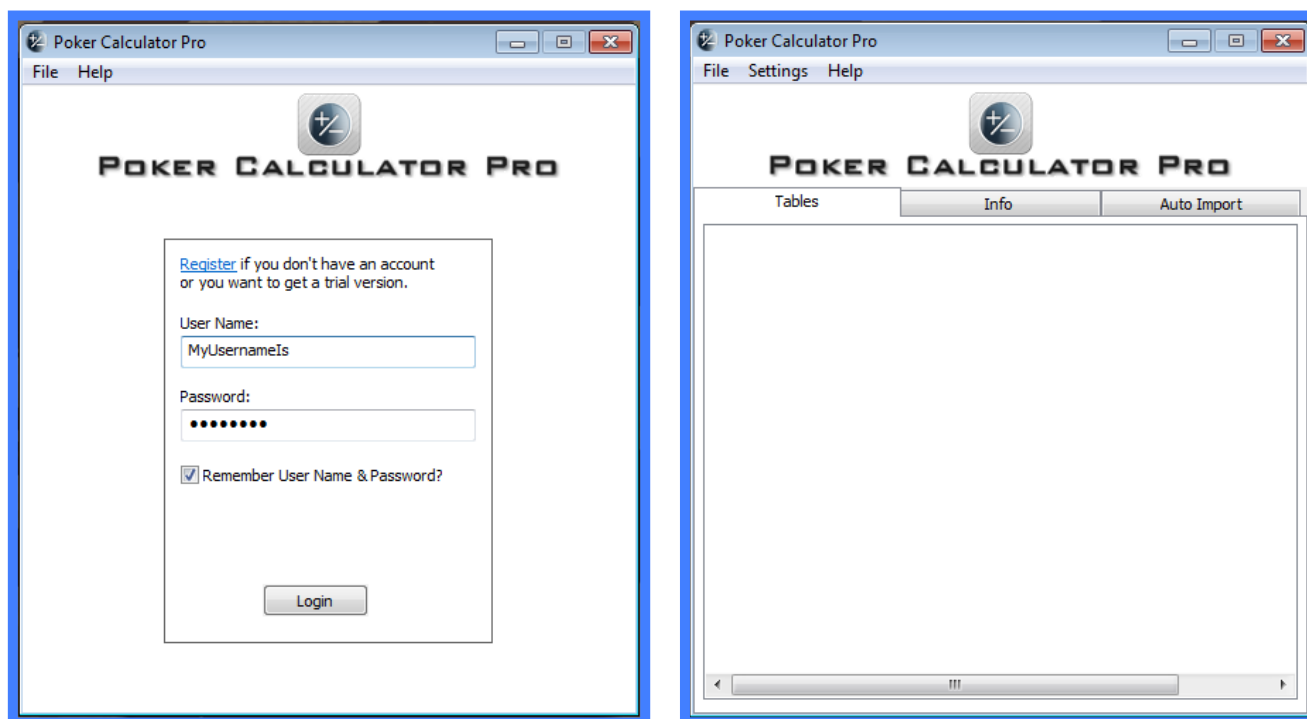
Right click on the icon, and select [Run As Administrator](#) to bring up the Poker Calculator Pro login page.



*Note: At this point your poker client (eg. PokerStars/iPoker) should not yet be open.*

If you have not created a PokerProLabs Account, you will first need to do so [here](#). Otherwise, you are ready to log in to Poker Calculator Pro with your PPL account:

Enter your login details in the boxes shown left. Once you have successfully logged in to Poker Calculator Pro, you will see the main Poker Calculator Pro window on the right.



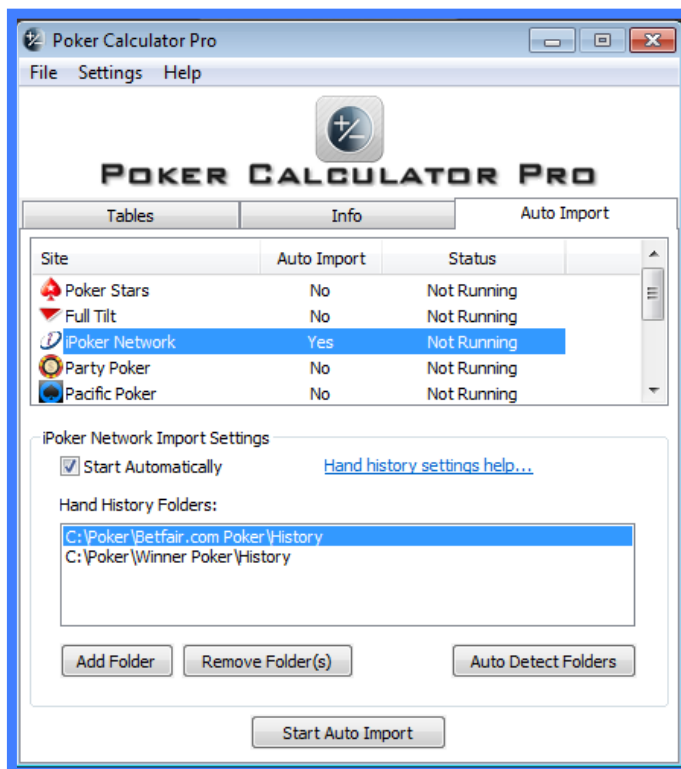
Once you're logged in, the next step is to set up Poker Calculator Pro to [Auto Import](#) hands.





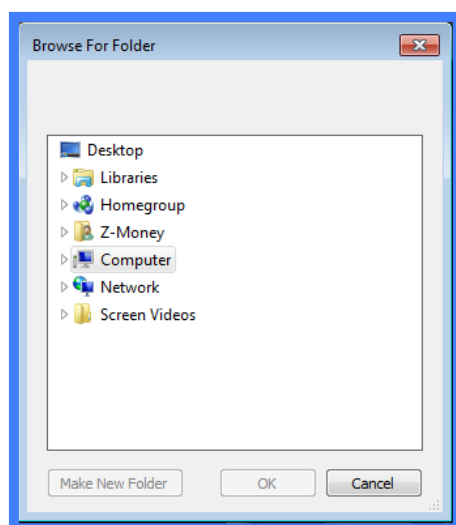
## AUTO IMPORT

In order to provide certain statistics and recognize your active tables, Poker Calculator Pro needs to have the Auto Import running. To set this up click on the Auto Import tab and you will see a list of all compatible poker sites.



Click on the site(s) you are going to be playing and tick the **Start Automatically** checkbox. When you do this Auto Import will change from No to Yes.

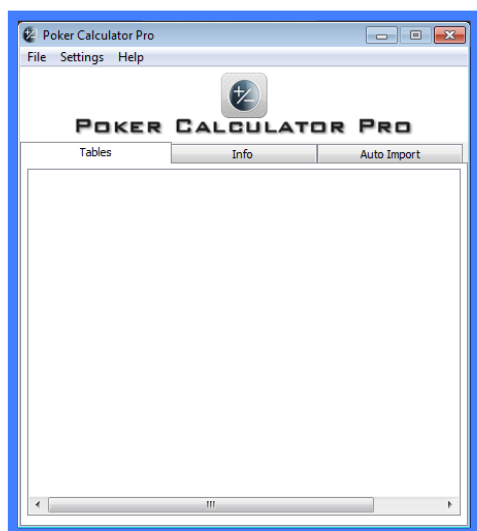
If the **Hand History Folders** are not already listed, click the **Auto Detect Folders** button and they should appear. If they cannot be found automatically, you can manually locate them using the **Add Folder** button:



Once the desired Hand History Folders are listed, click the **Start Auto Import** button and **Status** will change from Not Running to Running, indicating that Auto Import is active.



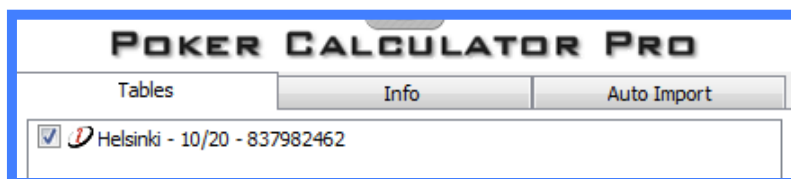
## PLAYING A TABLE WITH POKER CALCULATOR PRO



Now that you've set up auto-import, it's time to open the poker client you wish to play in.

Make sure you right click and **Run As Administrator** for the poker client, just as you did for Poker Calculator Pro.

Once the client is running, open up a table of your preferred Hold'em format and it will appear in the previously empty **Tables** tab.



The Poker Calculator Pro **Information Window** (explained in detail on the next page) attaches itself to the bottom of the table. If the ☒ **Show HUD** checkbox on the top left corner of the table is checked, then the **Poker Calculator Pro HUD** will be also displayed on the table.

Both the **Information Window** and the **Poker Calculator Pro HUD** are shown in full functionality below. (Some sites may prohibit certain functions, such as **Recommendations**.)

Seat	Player Name	Preflop	Flop	Turn	River
1	rjnd67	X			
2	jsnacional85	C	✓		
3	LibertyRising	X			
4	kipitilnik2	X			
5	usinner	SB X			
6	BluffPolice	BB ✓	✓		

Chance of ...	%	Outs
Four of a Kind	4.3	1
Full House	25.8	6

Winning: 95.20%  
Pot Odds:  
Your Hand: Three of a Kind Sixes



## THE INFORMATION WINDOW

Seat	Player Name	Preflop	Flop	Turn	River
1	ABurnTT				
2	tmx187				
3	ETHpokerM				
4	viralis				
5	BluffPolice				
6	bokje1				
7	nenesalim				
8	sativav				
9	WGZPRO				

Check/Call

Chance of ...	%%	Outs
Full House	17.2	4

Winning: 46.95%

Pot Odds: 7.00 to 1

Your Hand: Two Pair Tens and Sevens

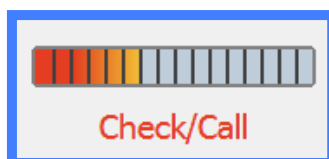
The **left side** of the **Information Window** (above) shows the **Actions** taken by each player on every street:

<b>SB</b>	Small Blind
<b>BB</b>	Big Blind
<b>X</b>	Fold
<b>✓</b>	Check
<b>C</b>	Call
<b>B</b>	Bet
<b>R</b>	Raise
<b>A</b>	ALL IN

In the **middle** is a graphical depiction of your preflop **Hole Cards** and the 5 **Community Cards** in order. The suits are shown four colours to make it easier to differentiate between them.



Underneath this is the **Hand Strength Gauge**, which visually indicates the strength of your hand, with red indicating very weak hands, yellow indicating moderate strength and green hands being extremely strong hands. Below the gauge is the **Recommendation** of what action to take.



On the **right** is a box showing the probability of making certain hands. In this example, the remaining two 7s and two Ts will give us a full house. These four cards are our **Outs** to a full house. As well as the number of outs, the **%** of hitting the hand by the river is also shown here.

Chance of ...	%%	Outs
Straight	34.4	8

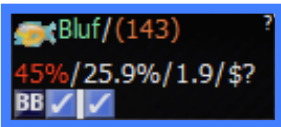
Beneath this box are your estimated odds of **Winning** the hand, the **Pot Odds** that you are getting on making a call, and the actual made hand you have at the moment.



## THE POKER CALCULATOR PRO HUD

The Poker Calculator Pro HUD has several different HUD groups by default. For most of the groups, clicking the **?** in the top right corner will show the name of each stat.

### Player HUD



A separate Player HUD will appear for each individual player at the table.

### HUD Line 1:

**Player Type** will use statistics to generalize what type of player the person is. Below is a description of what these icons mean:

Player Types:		
Icon	Name	Priority
	Fish	1
	Good Player - Tight	2
	Gambler	3
	Rock	4
	Calling Station	5
	Loose/Aggressive	6
	Loose/Passive	7
	Tight/Aggressive	8
	Tight/Passive	9
	Wild	10
	Super Tight	11
	Good Player - Loose	12

**Fish:** Always finds it hard to fold. Don't bluff them, bet big with strong hands to get maximum value.

**GP/Tight:** Plays mostly good hands and plays them aggressively. Mixes it up a little too though. Avoid them unless you also have a good hand.

**Gambler:** A gambler loves to chase their draws. Raises often postflop.

**Rock:** Only plays premium hands. Make money from rocks by stealing their blinds.

**Calling Station:** Loves to call. Don't try to bluff them, instead bet big with decent to good hands and you will get paid off nicely.

**Loose/Aggressive:** This player plays a wide range of hands aggressively. Not as crazy as a Gambler, it is hard to put them on a hand. Sometimes you might have to call them down with a hand weaker than you normally would.

**Loose/Passive:** Similar to a Fish, this player loves to call so just bet for value.

**Tight/Aggressive:** Similar to GP/Tight, be careful as these guys are good.

**Tight/Passive:** Like the Rocks, just steal their blinds and watch out if they raise you.

**Wild:** These players are unpredictable but will bluff away their stack if you're patient.

**Super Tight:** If he doesn't have a huge hand he isn't playing. Steal his blinds.

**GP/ Loose:** A more cautious Loose/Aggressive. Hard to play against, keeps you guessing as to if they have it or if they are bluffing.

**Player Name** is an abbreviation of the player's screen name.

**(Hands Count)** is the number of hands that player has played (while you are at the table and Poker Calculator Pro is importing hands).

### HUD Line 2:

**Voluntarily Put Money In Pot %**, often shortened to VPIP is the percentage of hands the player played of their own free will, by deliberately putting money in the pot (not blinds.)

**Pre-Flop Raise %** is the percentage of the time the player raises preflop.

**Total Aggression Factor** is the level of aggression displayed by the player. This is a ratio of aggressive moves (bets/raises) to passive moves (calls). Higher Aggression Factor means the player is more aggressive.

**\$ Net Won** is the total amount won by the player in hands that you have imported.



### **HUD Line 3:**

**Actions History** uses symbols to convey the actions taken by the player on each street. The individual symbols are explained on page 3.

### **Recommendations HUD**

This HUD group will show you the recommended action to take.



Beneath this recommended action you will see the Hand Strength Gauge, which is a visual representation of how strong your hand is from **Weak** to **Moderate** to **Strong**.

### **Probabilities HUD**

Chance of Winning:	94.2%
Hand Odds:	0.1 to 1
Pot Odds:	? to 1
Current Hand:	Three of a Kind Sixes

This HUD will provide everything you need to know. Your **Chance of Winning** against the possible hands opponent can have will be shown. **Hand Odds** is this probability expressed as a ratio.

**Pot Odds** are the odds you are getting on a call, when facing a bet. **Current Hand** is the type of hand you have made at this point in time.

### **Odds and Outs HUD**

Chance of getting	%	Outs ?
Four of a Kind	2.2	1
Full House	19.6	9

The Odds and Outs HUD will show you the chance of improving your hand to a better one.

**%** is the probability to make that hand on the next community card, and **Outs** are the number of cards you can hit to improve to that hand.

### **Marking Hands HUD**

☐ Mark this hand will allow you to mark a hand for review in Hold'em Profiler. To mark a hand, check this checkbox (located in the top right corner) while the hand is in play.



## PLAYER HUD - POPUPS (PREFLOP)

Clicking on the Player HUD will bring up informational popups for that player. There is a popup for every street: Preflop, Flop, Turn and River.

### Preflop Popup



	Total	Blinds	EP	MP	LP
VP\$IP	46%	40%	33%	58%	57%
PreFlop Raise	28%	14%	15%	42%	49%
Aggr Factor	2	1	1	3	6
Fold Big Blind to Steal	22%				
Attempt to Steal	18%				
Fold to Continuation Bet on Flop	43%				
Won Money at Show Down	43%				
BB/100	-2				

The Preflop Popup contains a lot of different stats, for the **Total** number and separately for each position; **EP** (Early Position); **MP** (Middle Position); **LP** (Late Position) and **Blinds**.

The first three stats: **VP\$IP**, **PreFlop Raise** and **Aggr(ession) Factor**, you will recognize from the main Player HUD group (described on page 7).

**Fold Big Blind to Steal** is the % of the time that the player folded their big blind against a late position raise (blind steal).

**Attempt to Steal** is the % of the time that a player themselves attempts to raise from late position to steal the blinds.

**Fold to Continuation Bet On Flop** is the % that the player folds against a C-Bet (betting after betting/raising last on the previous street) on the flop.

**Won Money At Showdown** is the % of the time the player had the best hand when they took their hand to showdown on the river.

**BB/100** is their winrate in big blinds per hundred hands.



## PLAYER HUD - POPUPS (POSTFLOP)

Like the preflop popups, the postflop popups (Flop, Turn and River) show total stats, as well as stats for each EP, MP, LP and the Blinds.

### Flop, Turn and River Popups

	Total	Blinds	EP	MP	LP
Saw Flop	43	43	22	33	39
Aggr Factor Flop	3	2	2	1	9
Continuation Bet Flop	82				
Fold to Continuation Bet on Flop	43%				
Won Money at Show Down	43%				
BB/100	Chance of Winning: 2%				

(Flop Popup)

The popup statistics shown for the Flop, Turn and River are all the same, except that they are specific for their assigned street.

To illustrate this the abbreviation (F/T/R) will be used to indicate the stat is for Flop, Turn or River. For example **Saw (F/T/R)** will indicate the stat is **Saw Flop**, **Saw Turn** or **Saw River**, depending on which postflop popup you are viewing.

**Saw (F/T/R)** is the % that the player saw that street when they played a hand.

**Aggr Factor (F/T/R)** is the player's aggression ratio on that street. A higher number indicates more frequent aggression.

**Continuation Bet (F/T/R)** is the % of the time that the player bet that street, after being the last person to bet/raise on the previous street (thereby continuing the aggression, hence the name Continuation Bet)

**Fold to Continuation Bet On (F/T/R)** is the % frequency that the player folds when they are facing a continuation bet on that street.

**Won Money At Showdown** is the % of the time the player had the best hand when they took their hand to showdown on the river.

**BB/100** is their winrate in big blinds per hundred hands.

Here are pictures of the Turn and River popups, which look virtually identical to the Flop popup shown above:

	Total	Blinds	EP	MP	LP
Saw Turn	30%	36%	19%	33%	27%
Aggr Factor Turn	4	4	1	0	∞
Continuation Bet Turn	75%				
Fold to Continuation Bet on Turn	0%				
Won Money at Show Down	43%				
BB/100	Chance of Winning: 2%				

	Total	Blinds	EP	MP	LP
Saw River	26%	29%	19%	25%	26%
Aggr Factor River	3	5	∞	0	1
Continuation Bet on River	100%				
Fold to Continuation Bet on River	0%				
Won Money at Show Down	43%				
BB/100	Chance of Winning: 2%				

(Turn Popup)

(River Popup)

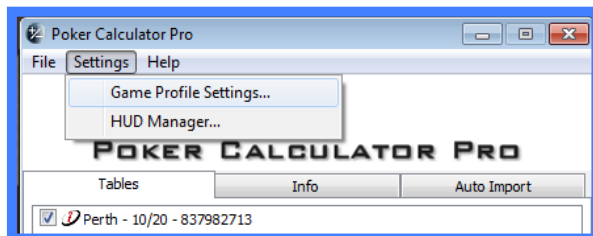




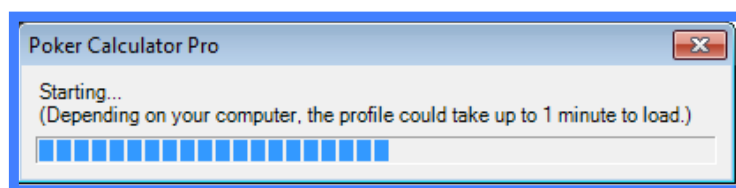
## GAME PROFILE SETTINGS

The previous pages of the guide covered the main features of Poker Calculator Pro. If you want to take the software even further, you can customize your Recommendations with **Game Profile Settings**, and customize your HUD with the **HUD Manager**.

To enter the Game Profile Settings editor, go to **Settings -> Game Profile Settings**



You may have to wait a few seconds for the editor to open:



Once open, the **Game Profile Settings** editor will look like this:

The screenshot shows the 'Poker Calculator Pro - default' window with the 'Settings' tab selected. The 'Profile' sub-tab is active, displaying a table of game profile settings. The table has columns for 'No Callers', 'Called Pot', 'Raised Pot', 'Reraised Pot', and 'Reraised Pot back to you'. The rows represent different positions: Small Blind, Big Blind, Under the Gun, Early Position, Middle Position, Late Position, and On the Button. Each cell contains a radio button for 'Raise' or 'Reraise'. The 'Example' section shows two cards: A♦ and A♠. The 'Copy From...' button is highlighted.

#	Type	Hand
1	Pair	AA
2	Suited	AK
3	Suited	AQ
4	Suited	AJ
5	Suited	AT
6	Suited	A9
7	Suited	A8
8	Suited	A7

	No Callers	Called Pot	Raised Pot	Reraised Pot	Reraised Pot back to you
Small Blind	Raise <input type="radio"/>	Raise <input type="radio"/>	Reraise <input type="radio"/>	Reraise <input type="radio"/>	Reraise <input type="radio"/>
Big Blind	<n/a> <input type="radio"/>	Raise <input type="radio"/>	Reraise <input type="radio"/>	Reraise <input type="radio"/>	Reraise <input type="radio"/>
Under the Gun	Raise <input type="radio"/>	Raise <input type="radio"/>	Reraise <input type="radio"/>	Reraise <input type="radio"/>	Reraise <input type="radio"/>
Early Position	Raise <input type="radio"/>	Raise <input type="radio"/>	Reraise <input type="radio"/>	Reraise <input type="radio"/>	Reraise <input type="radio"/>
Middle Position	Raise <input type="radio"/>	Raise <input type="radio"/>	Reraise <input type="radio"/>	Reraise <input type="radio"/>	Reraise <input type="radio"/>
Late Position	Raise <input type="radio"/>	Raise <input type="radio"/>	Reraise <input type="radio"/>	Reraise <input type="radio"/>	Reraise <input type="radio"/>
On the Button	Raise <input type="radio"/>	Raise <input type="radio"/>	Reraise <input type="radio"/>	Reraise <input type="radio"/>	Reraise <input type="radio"/>



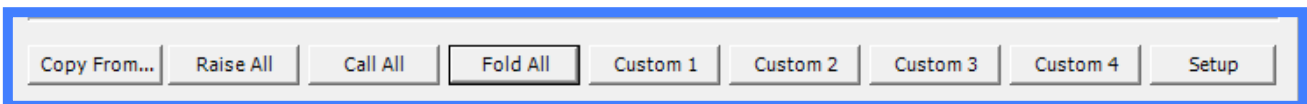


## GAME PROFILE SETTINGS - PROFILES AND PRESETS

Game Profile Settings will open with the **default** profile. You can modify this default profile or you can create your own by clicking **Profile -> New**

You can then enter the name for the New profile, as well as choosing whether to create from a blank profile or to combine profile parts from your existing profiles.

Once in the profile, you will notice there is a row of **Preset** buttons. These buttons will change the action set for the selected hand to the actions of the chosen preset.



For example, clicking the **Fold All** preset button will result in every action being changed to a fold for that hand (except when hero can check for free without putting any more money in).

	No Callers	Called Pot	Raised Pot	Reraised Pot	Reraised Pot back to you
Small Blind	Fold <input type="radio"/>	Fold <input type="radio"/>	Fold <input type="radio"/>	Fold <input type="radio"/>	Fold <input type="radio"/>
Big Blind	<n/a> <input type="radio"/>	Check <input type="radio"/>	Fold <input type="radio"/>	Fold <input type="radio"/>	Fold <input type="radio"/>
Under the Gun	Fold <input type="radio"/>	Fold <input type="radio"/>	Fold <input type="radio"/>	Fold <input type="radio"/>	Fold <input type="radio"/>
Early Position	Fold <input type="radio"/>	Fold <input type="radio"/>	Fold <input type="radio"/>	Fold <input type="radio"/>	Fold <input type="radio"/>
Middle Position	Fold <input type="radio"/>	Fold <input type="radio"/>	Fold <input type="radio"/>	Fold <input type="radio"/>	Fold <input type="radio"/>
Late Position	Fold <input type="radio"/>	Fold <input type="radio"/>	Fold <input type="radio"/>	Fold <input type="radio"/>	Fold <input type="radio"/>
On the Button	Fold <input type="radio"/>	Fold <input type="radio"/>	Fold <input type="radio"/>	Fold <input type="radio"/>	Fold <input type="radio"/>

The **Custom (1-4)** buttons can be customized by clicking on the **Setup** button. You can also change the existing presets (such as **Raise All** etc.) if you wish.

To demonstrate how to create a preset, we will be setting **Custom 1** as **Crazy Madman Mode**, by clicking the **Setup** button and entering the following action set:

PreFlop Buttons Setup

Button: Custom 1

Settings

Button name:  
Crazy Madman Mode

Copy settings from another button:  
Raise All Copy

	No Callers	Called Pot	Raised Pot	Reraised Pot	Reraised Pot back to you
Small Blind	Fold <input type="radio"/>	Call 25 / Fold 75 <input type="radio"/>	Call 10 / Fold 90 <input type="radio"/>	Call 50 / Fold 50 <input type="radio"/>	Reraise 50 / Fold <input type="radio"/>
Big Blind	<n/a> <input type="radio"/>	Check 50 / Raise <input type="radio"/>	Call 25 / Fold 75 <input type="radio"/>	Reraise 25 / Fold <input type="radio"/>	Call 75 / Fold 25 <input type="radio"/>
Under the Gun	Raise <input type="radio"/>	Call 25 / Fold 75 <input type="radio"/>	Reraise 10 / Fold <input type="radio"/>	Call 90 / Reraise <input type="radio"/>	Reraise 25 / Fold <input type="radio"/>
Early Position	Call 50 / Fold 50 <input type="radio"/>	Call 50 / Fold 50 <input type="radio"/>	Reraise 50 / Fold <input type="radio"/>	Call 50 / Fold 50 <input type="radio"/>	Call 50 / Fold 50 <input type="radio"/>
Middle Position	Raise 90 / Fold 10 <input type="radio"/>	Call 10 / Fold 90 <input type="radio"/>	Fold <input type="radio"/>	Call 50 / Fold 50 <input type="radio"/>	Reraise 25 / Fold <input type="radio"/>
Late Position	Call 25 / Fold 75 <input type="radio"/>	Call 50 / Fold 50 <input type="radio"/>	Call 50 / Fold 50 <input type="radio"/>	Call <input type="radio"/>	Reraise <input type="radio"/>
On the Button	Call 10 / Fold 90 <input type="radio"/>	Call 10 / Fold 90 <input type="radio"/>	Call 90 / Fold 10 <input type="radio"/>	Call 50 / Fold 50 <input type="radio"/>	Reraise 50 / Fold <input type="radio"/>

OK Cancel



Once you are done inputting the recommendations for each possible action you could face, hit OK and the preset button will change accordingly (*long Preset names will be abbreviated*)

Crazy Madm

After clicking the newly customized preset button, the preset actions you assigned will be applied to the selected hand:

	No Callers	Called Pot	Raised Pot	Reraised Pot	Reraised Pot back to you
Small Blind	Fold <input type="radio"/>	Call 25 / Fold 75 <input type="radio"/>	Call 10 / Fold 90 <input type="radio"/>	Call 50 / Fold 50 <input type="radio"/>	Reraise 50 / Fold <input type="radio"/>
Big Blind	<n/a> <input type="radio"/>	Check 50 / Raise <input type="radio"/>	Call 25 / Fold 75 <input type="radio"/>	Reraise 25 / Fold <input type="radio"/>	Call 75 / Fold 25 <input type="radio"/>
Under the Gun	Raise <input type="radio"/>	Call 25 / Fold 75 <input type="radio"/>	Reraise 10 / Fold <input type="radio"/>	Call 90 / Reraise <input type="radio"/>	Reraise 25 / Fold <input type="radio"/>
Early Position	Call 50 / Fold 50 <input type="radio"/>	Call 50 / Fold 50 <input type="radio"/>	Reraise 50 / Fold <input type="radio"/>	Call 50 / Fold 50 <input type="radio"/>	Call 50 / Fold 50 <input type="radio"/>
Middle Position	Raise 90 / Fold 10 <input type="radio"/>	Call 10 / Fold 90 <input type="radio"/>	Fold <input type="radio"/>	Call 50 / Fold 50 <input type="radio"/>	Reraise 25 / Fold <input type="radio"/>
Late Position	Call 25 / Fold 75 <input type="radio"/>	Call 50 / Fold 50 <input type="radio"/>	Call 50 / Fold 50 <input type="radio"/>	Call <input type="radio"/>	Reraise <input type="radio"/>
On the Button	Call 10 / Fold 90 <input type="radio"/>	Call 10 / Fold 90 <input type="radio"/>	Call 90 / Fold 10 <input type="radio"/>	Call 50 / Fold 50 <input type="radio"/>	Reraise 50 / Fold <input type="radio"/>



## GAME PROFILE SETTINGS - PREFLOP

**PreFlop** is the tab that is first open by default. From here you can access every possible preflop hole cards, including differentiation between suited and unsuited cards eg. AKs/AKo.

Poker Calculator Pro - default

Profile Settings

PreFlop | Flop | Turn | River | Bluffing | CheckRaise | SlowPlay | Profile Notes

Example  

Copy From... Raise All Call All Fold All Custom 1 Custom 2 Custom 3 Custom 4 Setup

#	Type	Hand
1	Pair	AA
2	Suited	AK
3	Suited	AQ
4	Suited	AJ
5	Suited	AT
6	Suited	A9
7	Suited	A8
8	Suited	A7

	No Callers	Called Pot	Raised Pot	Reraised Pot	Reraised Pot back to you
Small Blind	Raise <input type="radio"/>	Raise <input type="radio"/>	Reraise <input type="radio"/>	Reraise <input type="radio"/>	Reraise <input type="radio"/>
Big Blind	<n/a> <input type="radio"/>	Raise <input type="radio"/>	Reraise <input type="radio"/>	Reraise <input type="radio"/>	Reraise <input type="radio"/>
Under the Gun	Raise <input type="radio"/>	Raise <input type="radio"/>	Reraise <input type="radio"/>	Reraise <input type="radio"/>	Reraise <input type="radio"/>
Early Position	Raise <input type="radio"/>	Raise <input type="radio"/>	Reraise <input type="radio"/>	Reraise <input type="radio"/>	Reraise <input type="radio"/>
Middle Position	Raise <input type="radio"/>	Raise <input type="radio"/>	Reraise <input type="radio"/>	Reraise <input type="radio"/>	Reraise <input type="radio"/>
Late Position	Raise <input type="radio"/>	Raise <input type="radio"/>	Reraise <input type="radio"/>	Reraise <input type="radio"/>	Reraise <input type="radio"/>
On the Button	Raise <input type="radio"/>	Raise <input type="radio"/>	Reraise <input type="radio"/>	Reraise <input type="radio"/>	Reraise <input type="radio"/>

Save Cancel



Select the hole cards you want to change the actions for, and the action set for those cards will appear below the hole cards list.

To change one of the action recommendations in a given scenario, click on the action and a drop down menu of options will appear. Below we can see the action set for pocket aces (AA):

#	Type	Hand
1	Pair	AA
2	Suited	AK
3	Suited	AQ
4	Suited	AJ
5	Suited	AT
6	Suited	A9
7	Suited	A8
8	Suited	A7

	No Callers	Called Pot	Raised Pot	Reraised Pot	Reraised Pot back to you
Small Blind	Raise <input type="radio"/>	Call 25 / Raise 75 <input type="radio"/>	Reraise <input type="radio"/>	Reraise <input type="radio"/>	Reraise <input type="radio"/>
Big Blind	<n/a> <input type="radio"/>	Call 75 / Fold 25 <input type="radio"/>	Reraise <input type="radio"/>	Reraise <input type="radio"/>	Reraise <input type="radio"/>
Under the Gun	Raise <input type="radio"/>	Call 90 / Fold 10 <input type="radio"/>	Reraise <input type="radio"/>	Reraise <input type="radio"/>	Reraise <input type="radio"/>
Early Position	Raise <input type="radio"/>	Call 10 / Raise 90 <input type="radio"/>	Reraise <input type="radio"/>	Reraise <input type="radio"/>	Reraise <input type="radio"/>
Middle Position	Raise <input type="radio"/>	Call 25 / Raise 75 <input type="radio"/>	Reraise <input type="radio"/>	Reraise <input type="radio"/>	Reraise <input type="radio"/>
Late Position	Raise <input type="radio"/>	Call 50 / Raise 50 <input type="radio"/>	Reraise <input type="radio"/>	Reraise <input type="radio"/>	Reraise <input type="radio"/>
On the Button	Raise <input type="radio"/>	Call 75 / Raise 25 <input type="radio"/>	Reraise <input type="radio"/>	Reraise <input type="radio"/>	Reraise <input type="radio"/>

Save Cancel

All you have to do is click on the action you want to be recommended and hit **Save**.

	No Callers	Called Pot	Raised Pot	Reraised Pot	Reraised Pot back to you
Small Blind	Raise <input type="radio"/>	Call 25 / Raise 75 <input type="radio"/>	Reraise <input type="radio"/>	Reraise <input type="radio"/>	Reraise <input type="radio"/>
Big Blind	<n/a> <input type="radio"/>	Raise <input type="radio"/>	Reraise <input type="radio"/>	Reraise <input type="radio"/>	Reraise <input type="radio"/>
Under the Gun	Raise <input type="radio"/>	Raise <input type="radio"/>	Reraise <input type="radio"/>	Reraise <input type="radio"/>	Reraise <input type="radio"/>
Early Position	Raise <input type="radio"/>	Raise <input type="radio"/>	Reraise <input type="radio"/>	Reraise <input type="radio"/>	Reraise <input type="radio"/>
Middle Position	Raise <input type="radio"/>	Raise <input type="radio"/>	Reraise <input type="radio"/>	Reraise <input type="radio"/>	Reraise <input type="radio"/>
Late Position	Raise <input type="radio"/>	Raise <input type="radio"/>	Reraise <input type="radio"/>	Reraise <input type="radio"/>	Reraise <input type="radio"/>
On the Button	Raise <input type="radio"/>	Raise <input type="radio"/>	Reraise <input type="radio"/>	Reraise <input type="radio"/>	Reraise <input type="radio"/>

Save Cancel

Now, when we are in a Called Pot in the Small Blind, the recommendation will sometimes be to call (25% of the time) and sometimes be to raise (75% of the time) when holding AA preflop.

Using this method, you can change the preflop recommendations for any hole cards from any position, and facing any preflop action. This method will be almost identical for Postflop Recommendations as well.



## GAME PROFILE SETTINGS - FLOP

The next tab in the editor will allow you to edit the **Flop** recommendations.

Flop recommendations can be edited the exact same way as the Preflop recommendations. Just select the hand, click the scenario you want to edit, edit it and **Save**.

#	Board	Your Hand
1	No Pair	Royal Flush
2	No Pair	Straight Flush
3	No Pair	Nut Flush
4	No Pair	Non Nut Flush
5	No Pair	Nut Straight
6	No Pair	Nut Straight (2 cards flush on board)
7	No Pair	Nut Straight (3 cards flush on board)
8	No Pair	Non Nut Straight
9	No Pair	Non Nut Straight (2 cards flush on board)
10	No Pair	Non Nut Straight (3 cards flush on board)

	No Actions	Raised Pot	Reraised Pot	Reraised Pot back to you
FirstPosition	Bet <input type="radio"/>	Reraise <input type="radio"/>	Reraise <input type="radio"/>	Reraise <input type="radio"/>
Early Position	Bet <input checked="" type="radio"/>	Reraise <input checked="" type="radio"/>	Reraise <input checked="" type="radio"/>	Reraise <input checked="" type="radio"/>
Middle Position	Bet <input checked="" type="radio"/>	Reraise <input checked="" type="radio"/>	Reraise <input checked="" type="radio"/>	Reraise <input checked="" type="radio"/>
Late Position	Bet <input checked="" type="radio"/>	Reraise <input checked="" type="radio"/>	Reraise <input checked="" type="radio"/>	Reraise <input checked="" type="radio"/>
LastPosition	Bet <input checked="" type="radio"/>	Reraise <input checked="" type="radio"/>	Reraise <input checked="" type="radio"/>	Reraise <input checked="" type="radio"/>

Instead of being grouped based on Preflop hole cards, the Flop tab will group hands based on flopped hand strength. If you are unsure what hand is meant exactly, you can refer to the **Example** picture at the top, which visually illustrates that type of hand.

## GAME PROFILE SETTINGS - TURN AND RIVER

The **Turn** and **River** tabs work in exactly the same way as the Flop tab, grouping hands based on current strength. The only difference is that River hands will not include draws as you can no longer have a drawing hand on the river.



## GAME PROFILE SETTINGS - BLUFFING

The **Bluffing** section of the Game Profile Settings helps you regulate your postflop bluffing frequencies.

Condition	Default %
<b>Flop</b>	
From the blind position with junk on the board	0%
From the blind position with small pair on the board	10%
From late or last position if everyone checks	25%
<b>Turn</b>	
From last position if no bet on the Flop or Turn	25%
<b>River</b>	
From last position if everyone checks	30%
Follow through betting:	25%
If you bet or raised before the flop, bet again on the flop	30%
	35%
	40%
	45%
	50%
	55%
	60%

First you can set the maximum number of players that you will be recommended to bluff against.

Then you can set the criteria for common bluffing opportunities. For each opportunity, you can set the % at which you will be advised to bluff by Poker Calculator Pro.

Below these common bluffing opportunities, you can set your advised bluffing frequencies for **Follow through betting** (also known as Continuation Betting or C-betting) for each street, along with the maximum number of opponents to attempt a bluff against.

Condition	Percentage	Maximum opponents
If you bet or raised before the flop, bet again on the flop:	40%	3
If you bet or raised on the flop, bet again on the turn:	40%	3
If you bet or raised on the turn, bet again on the river:	40%	3

Save Cancel

When you are done hit **Save** and the new settings will be applied to the profile.



## GAME PROFILE SETTINGS - CHECKRAISE

The **Checkraise** function allows you to set which hands are recommended to check and then raise the opponents bet on the Flop, Turn and River as well as the % frequency that the recommendation occurs at.

Check-Raise hands against opponent	Max Opponent	Default %
Flop		
Four of a Kind or better	1	0%
Full House	1	0%
Nut Flush	2	0%
Non Nut Flush	3	0%
Nut Straight	4	0%
Non Nut Straight	5	0%
Three of a Kind (Trips)	6	0%

Select the maximum number of opponents that you want to CheckRaise the hand against. To access Turn and River hands to CheckRaise, use the scroll bar on the far right.

The default % then allows you to set what % of the time a CheckRaise will be recommended for that hand strength.

Check-Raise hands against opponent	Max Opponent	Default %
Flop		
Four of a Kind or better	1	0%
Full House	0	65%
Nut Flush	0	70%
Non Nut Flush	0	75%
Nut Straight	0	80%
Non Nut Straight	0	85%
Three of a Kind (Trips)	0	90%

When you are done hit **Save** and the CheckRaise recommendations will be updated.



## GAME PROFILE SETTINGS - SLOWPLAY

The **SlowPlay** tab works very similar to the CheckRaise tab. It allows you to set the frequencies that you will be advised to SlowPlay (not betting to make your hand seem weaker than it actually is) your strong hands.

Slow Play hands against opponent	Default %
Four of a Kind or better	75%
Full House	65%
Nut Flush	35%
Non Nut Flush	0%
Nut Straight	0%
Non Nut Straight	0%
Three of a Kind (Trips)	0%
Three of a Kind (Set)	40%
Two Pairs with no pair on the board	0%
Two Pairs with Nut Kicker with no pair on the board	0%
	0%
	5%
	10%
	15%
	20%
	25%
	30%
	35%

SlowPlay does not specify streets so you only need to click on the hand and choose the % frequency for the SlowPlay recommendation, and then **Save** once you are done.

## GAME PROFILE SETTINGS - PROFILE NOTES

The **Profile Notes** tab is a simple text entry tab, which allows you to make any notes you want to make about the profile.

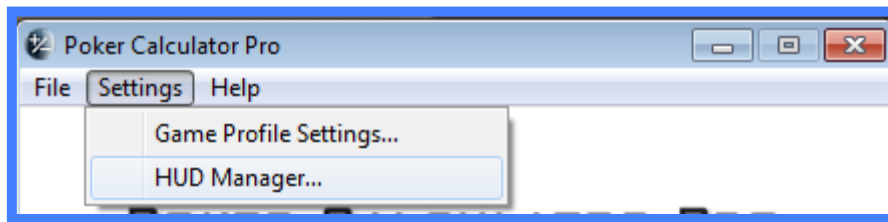
This feature can help you keep track of things when creating complex profiles, or to point out differences between profiles that are better suited to various types of tables.

Once you are finished writing all the notes, hit **Save** to store the notes you have written.

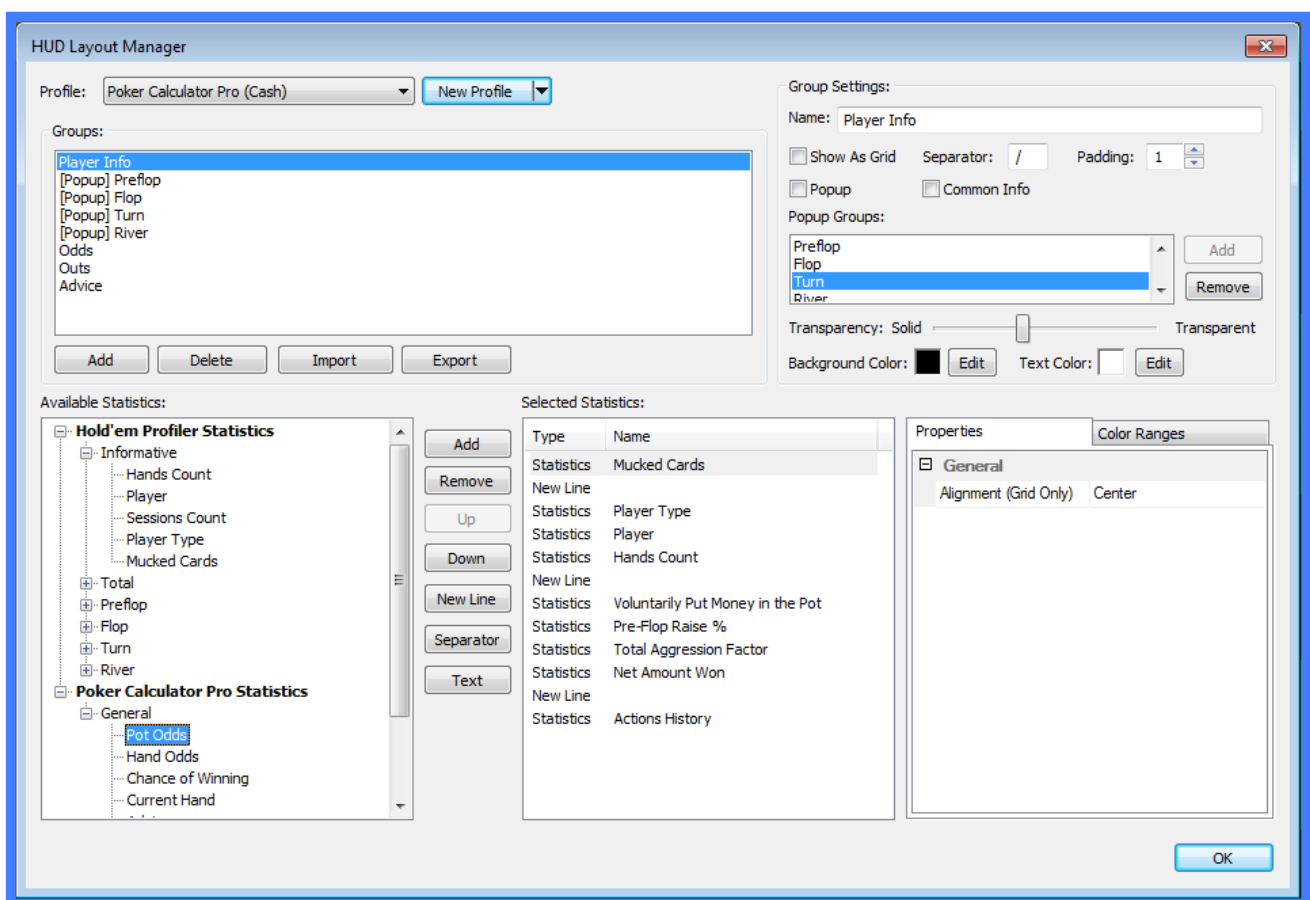


## HUD MANAGER

The previous descriptions of the HUD on page 8 are of its default state. Using the HUD Manager, you can also customize the HUD to your liking.



To access the HUD Manager click **Settings** -> **HUD Manager** in the main menu of Poker Calculator Pro. This will open the HUD Layout Manager:



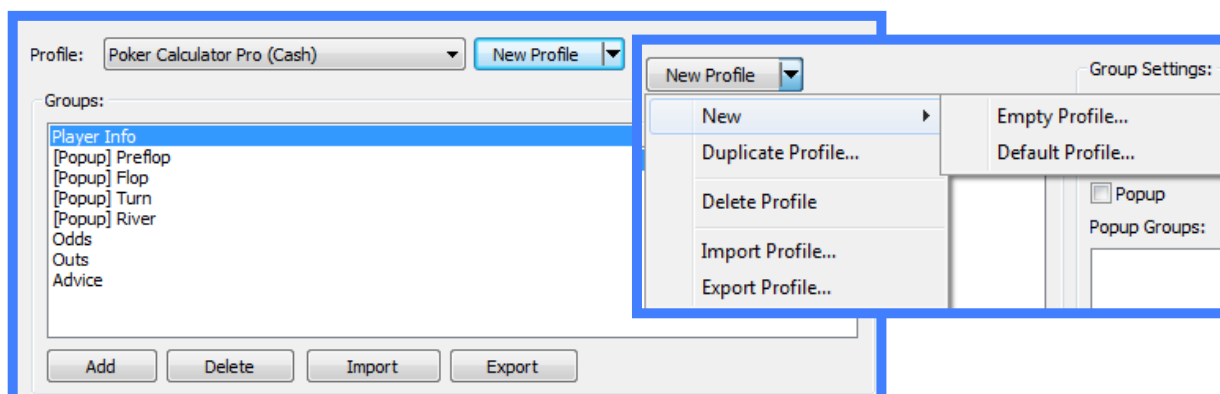
The **HUD Layout Manager** might look overwhelming at first, but it will be broken into sections and explained on the next page. Once you get used to it, it is fairly easy to create your own **HUD Profiles**.





## HUD MANAGER: CREATING YOUR OWN HUD PROFILE

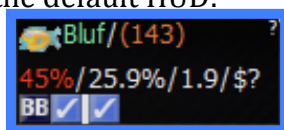
To make your own HUD Profile, you'll need to select New Profile in the top left corner of the HUD manager:



You can create a New Profile from scratch with **Empty Profile**, or create one with the **Default Profile** layout and change it from there.

Once you have a profile selected in the **Profile:** tab, the **Groups:** box should show all the different groups that make up the HUD.

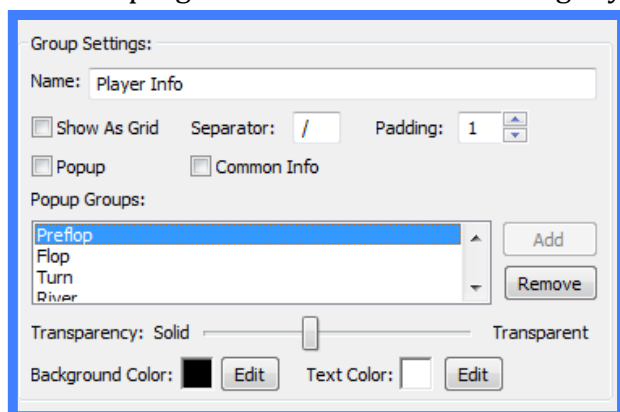
There are two types of groups, **Normal** and **[Popup]**. A normal group is a HUD box that will appear on the table next to every player (or only once if it is a **Common Group**). For example, the group "Player Info" is this part of the default HUD:



A **popup** is a group that appears only when you click on the normal group of a HUD. For more information about the default popups see page 10.

At the bottom of the Groups box, you have four buttons to help you manage your groups. **Add** will create a new group, **Delete** will delete the selected existing group. **Import** can import a pre-made group while **Export** will allow you to export groups so you or others can import them (you can also import and export entire HUD Profiles).

In the top right corner of the HUD Manager you will see the **Group Settings:**



First, you can customize the **Name** of the group.

Ticking **Show As Grid** will mean all stats in that group are aligned in a grid.

**Separator** allows you to choose what character is used to separate individual stats.

**Padding** allows you to specify how much space there is between different stats.



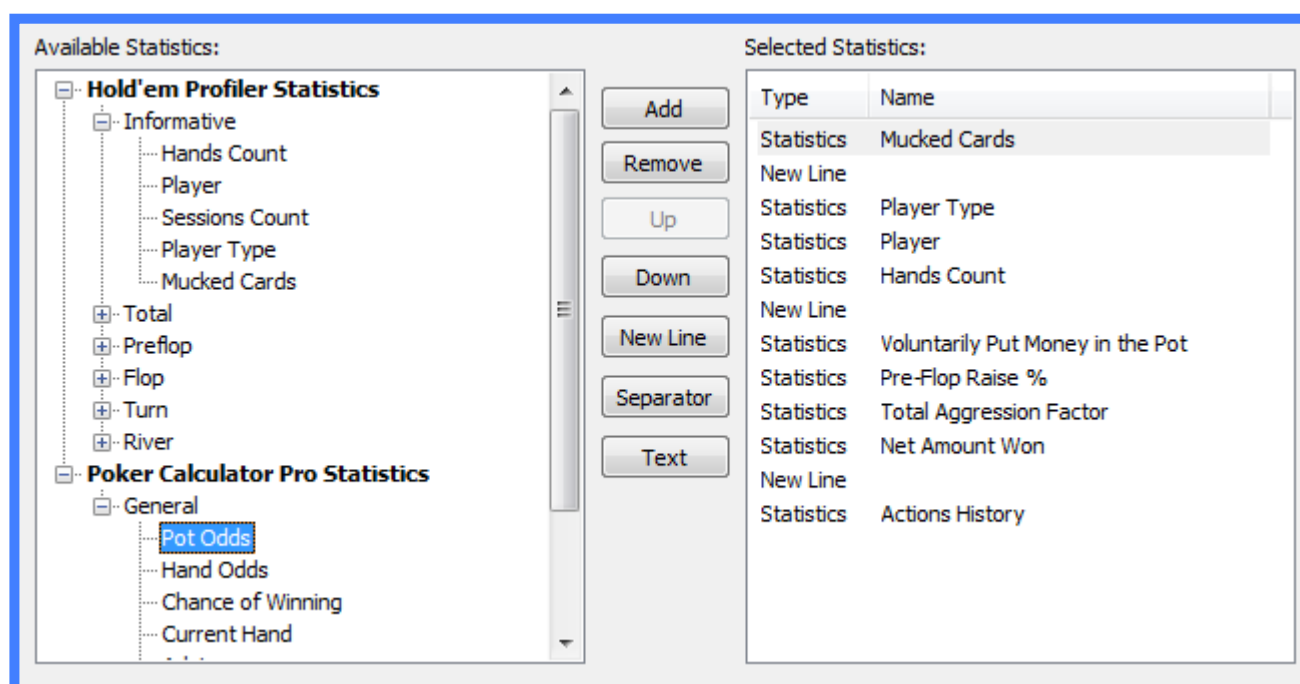
**Popup** checkbox allows you to set the Group as a Popup (check).

**Common Info** checkbox allows you to set the Group as Common Info (check).

The **Popup Groups** box only applies to normal groups, and lets you add or delete popups that are associated with that group. If you want a popup to appear when clicking on a HUD group, add it here. *(Note: You can't put a popup within a popup, this isn't [Inception](#))*

**Transparency** lets you set how transparent the HUD group is, from totally solid to completely transparent. **Background Color** lets you customize the colour of the HUD background. **Text Color** lets you customize the default colour of text in the HUD

Once you have decided on the layout of the HUD Group, you can then customize which stats appear in the group:



Pressing the + button on any group in the **Available Statistics** menu on the left will expand a wide range of stats to choose from. Pressing - will hide the contents of the group.

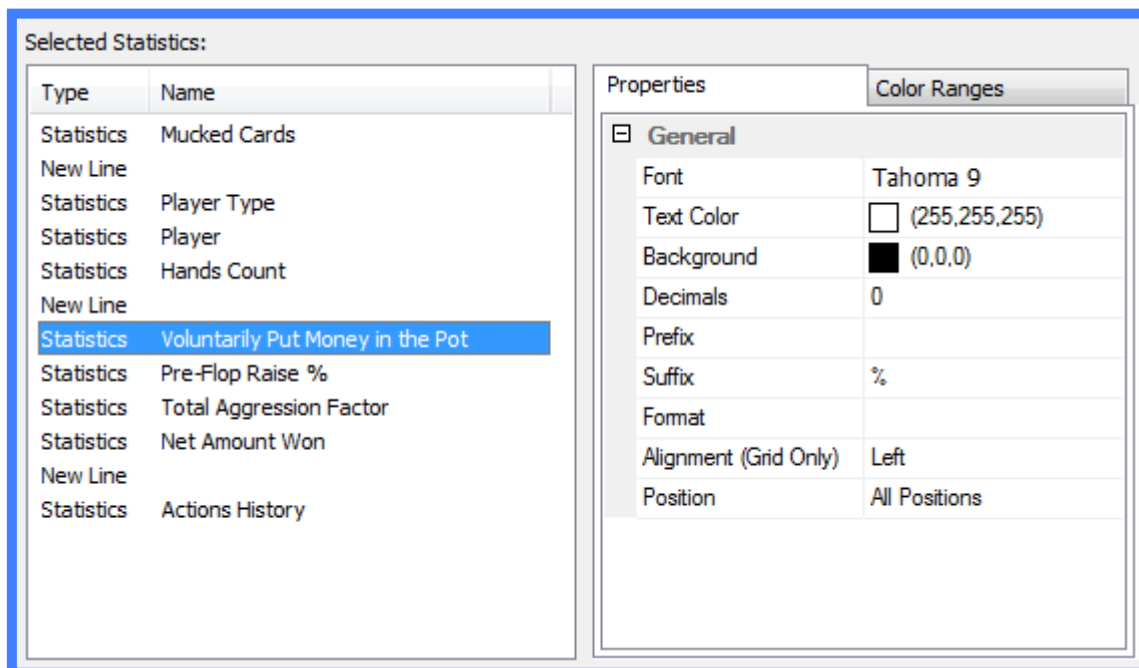
**Selected Statistics** are the statistics that are currently in the HUD group. **Add** will add the highlighted stat from Available Statistics into Selected Statistics, while **Remove** will remove a highlighted stat from Selected Statistics/the HUD.

Use the **Up** and **Down** buttons to order the stats on the right, and the **New Line** button to establish a new line in the HUD.

**Separator** will create a horizontal line to visually separate parts of the HUD group from each other. **Text** will allow you to create text in the HUD, which will allow you to label certain stats with their name to make them easier to recognize.

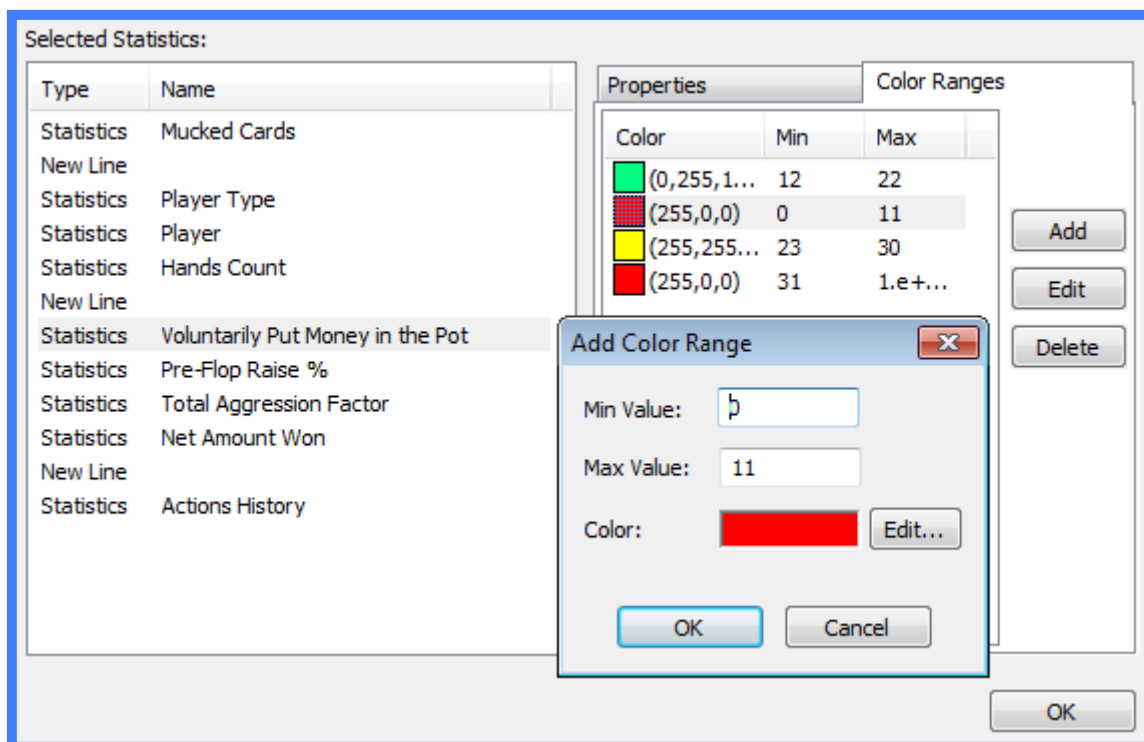


Once you have all the Selected Statistics you want in your HUD, you can then individually customize the stats using the bottom right corner of the HUD Manager. Click on the statistic you wish to customize and you will be able to edit its **Properties** and **Color Ranges**.



**Properties** allows you to customize the appearance of an individual stat. You can change the font, the text colour and background, add text before or after the stat with prefix and suffix options, assign formatting to the stat and choose whether the stat is aligned left, right or centered.

With **Color Ranges**, you can input certain ranges for the statistic, and if it falls within that range it will turn the assigned colour. For instance in the example below, when a player has a **VP\$IP** between 0 and 11%, their **Voluntarily Put Money In Pot** stat will turn red in the HUD.





Once you've done this, hit **OK** in the bottom right corner of the HUD Manager and you've created your own Custom Poker Calculator Pro HUD.

Thank you for choosing **Poker Calculator Pro**, and good luck at the tables.